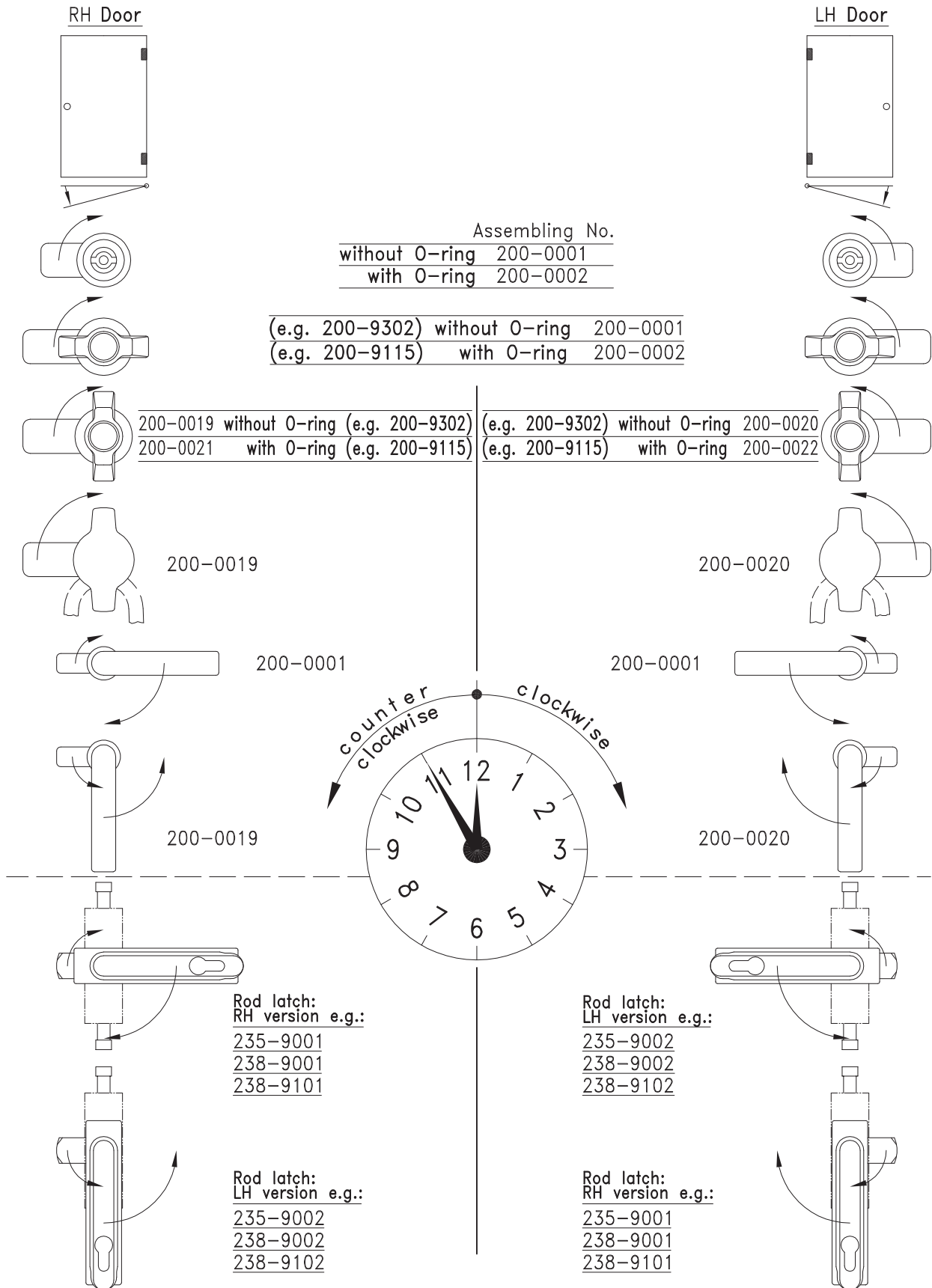


# Instruction 1: Door RH / LH

Explanation of Part No. for Cam Assembling and Opening Directions



Do not use Swinghandle as a lifting device!

# Instruction 2: Assembling Quarter-Turn Pr20.1

Assembling instructions for Quarter-Turns with standard or extended housings

## Assembly Notes:

- All parts marked with the same character (a, b) are one unit
- The closing stroke of a standard Quarter-Turn (except for compression latches) is 90°

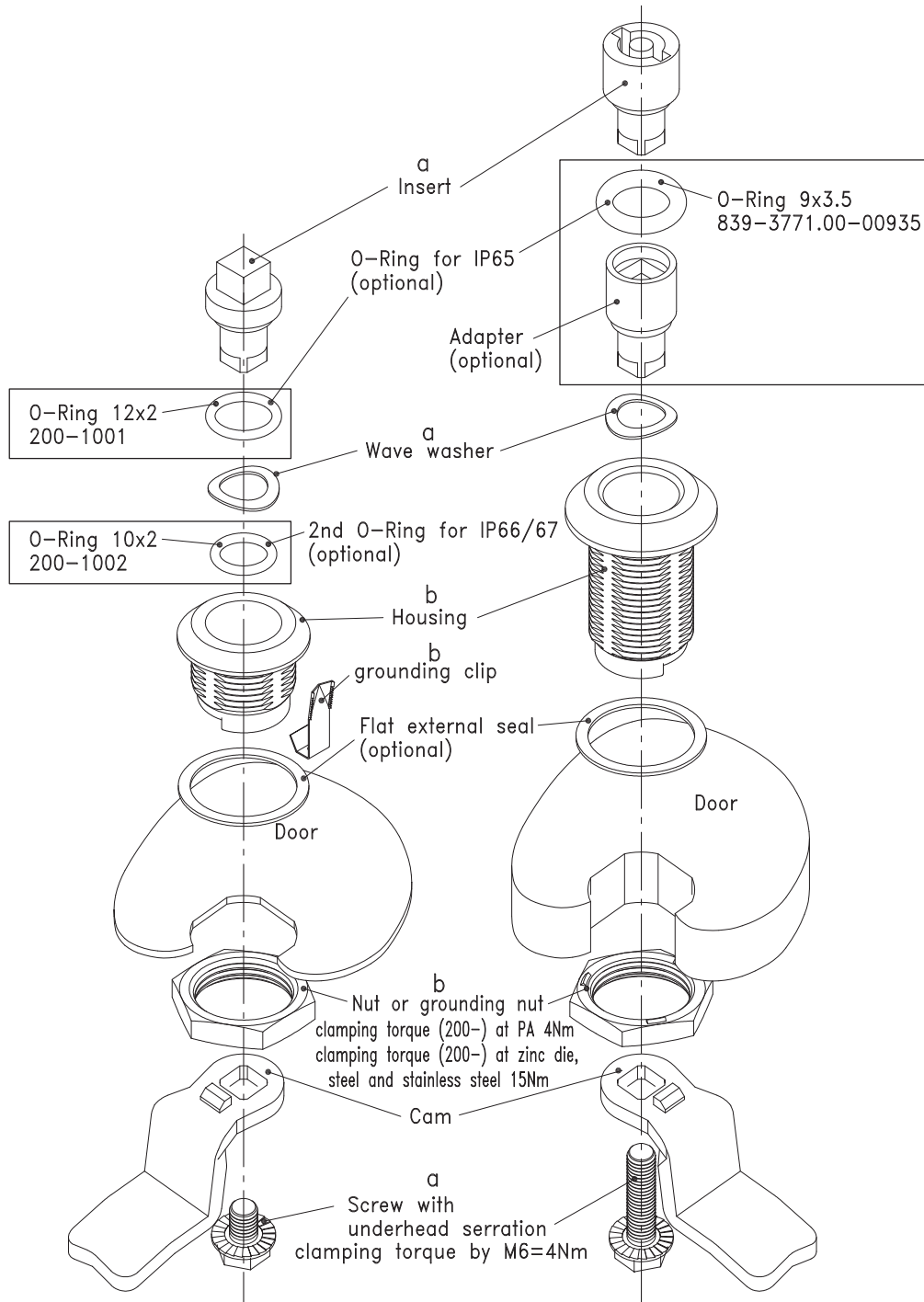
## Unit a consists of:

- Insert
- Wave washer
- Screw

## Unit b consists of:

- Housing
- Grounding clip

**NOTE:** The grounding clip is included in unit b depending on the part number ordered, see Product System 1-100. Contact DIRAK for information on grounding clip

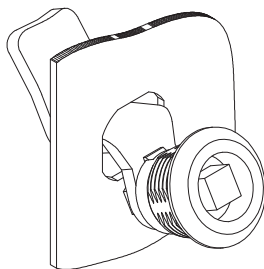
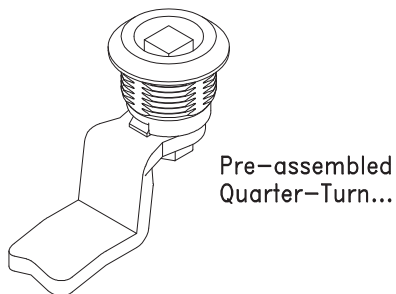
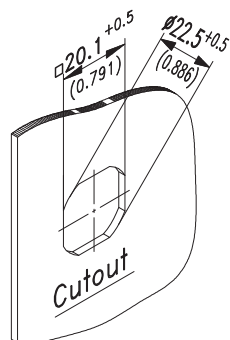


### Instruction 3: Installation of pre-assembled Quarter-Turn

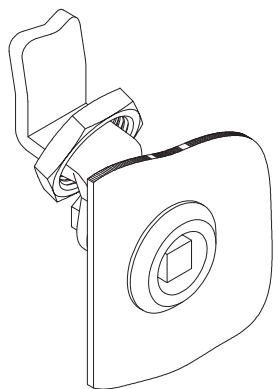
Pre-assembled Quarter-Turns can be installed in the cutout following the instructions below

The pre-assembled Quarter-Turns can be installed in the cutout according to the instructions to the left.

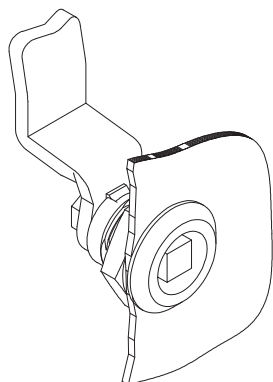
**NOTE:** This installation method is not possible for H-dimensions <13mm or thick doors



...slip Quarter-Turn through cutout...



...slide nut over the cam against the housing...

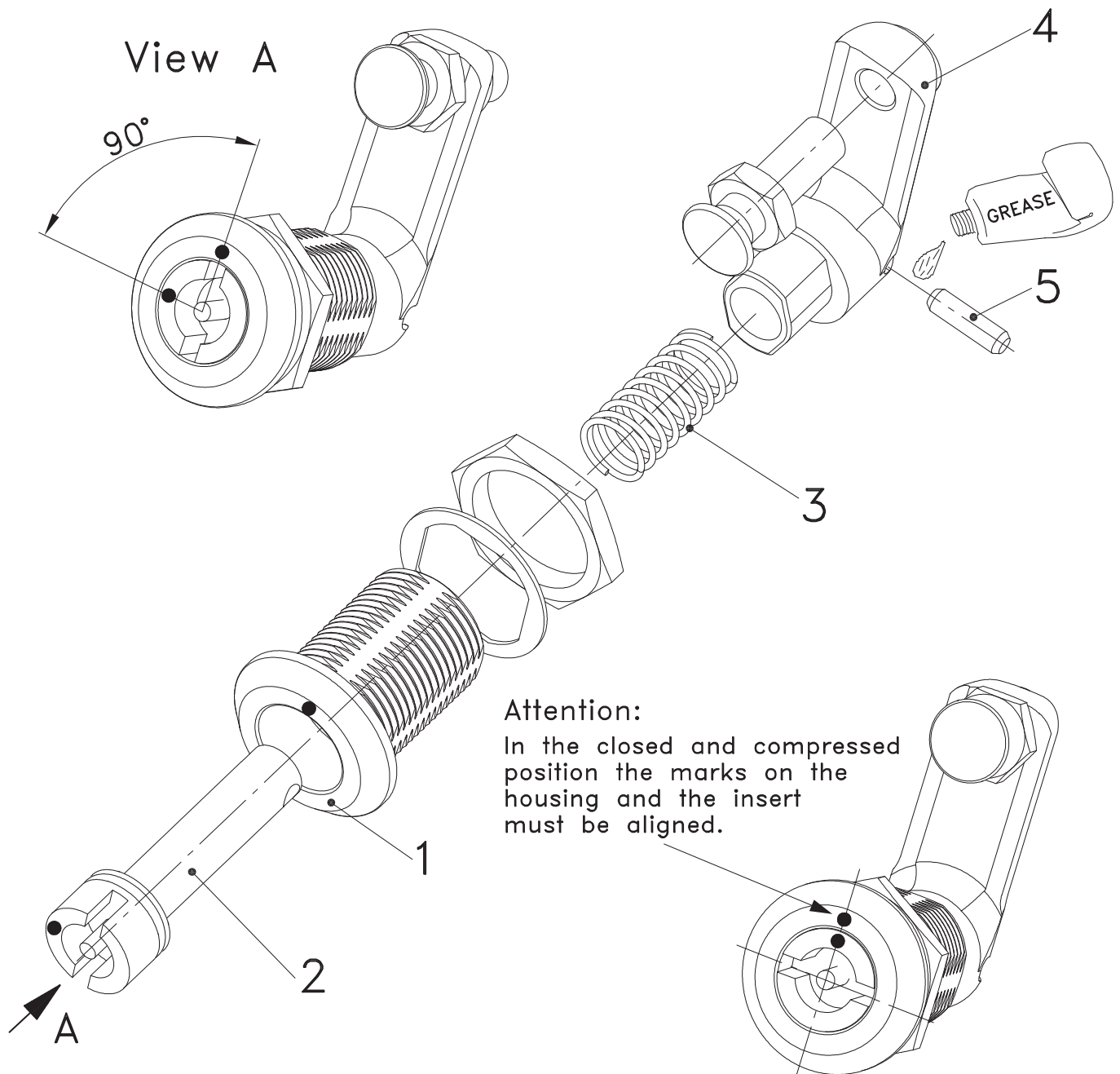


...tighten nut...

...the Quarter-Turn is completely fitted.

# Instruction 4: Assembling Compression Latch

See Product System 1-081



- A) Install housing (1) with the mark in the direction of the frame.
- B) Enter insert with fitted O-Ring (2) from the top. Make sure that the mark on the insert is positioned 90° counterclockwise to the mark on the housing.
- C) Slide spring (3) and cam (4) over the insert from the inside. (cam in the direction of the frame)
- D) Push cam (3) against the spring pressure and fit pin (5).
- E) Pin (5) and curve slopes MUST be greased generously.
- F) Install rest of hardware.